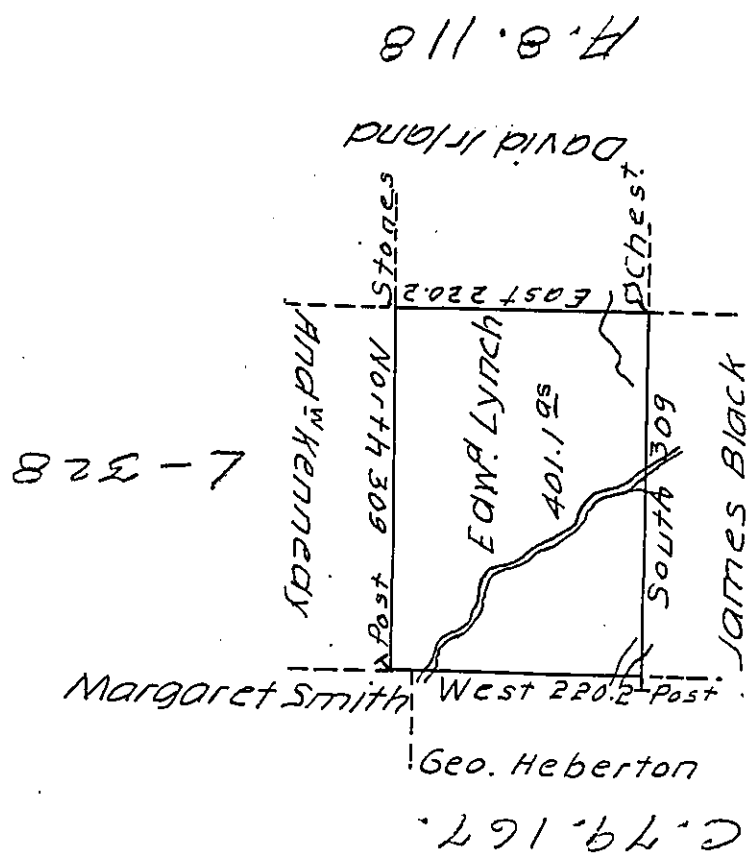


Foster -
Luzerne.



Draft of a tract of land called _____ Situate Joining
 land surv^d for James Black & others in the County of
 Northum^d Containing four hundred and one acres &
 one tenth and allow^e Surveyed for Edw^d Lynch the 6th
 day of Sep^r 1793 by Virtue of a Warrant dated the 13th
 day of June 1793.

To

by W^m Gray D.S.

Daniel Brodhead Esq^r.
 Surv^r Gen^l.

IN TESTIMONY that the above is a copy of the original remaining on file in
 the Department of Internal Affairs of Pennsylvania, made
 conformably to an Act of Assembly approved the 16th day of
 February, 1833, I have hereunto set my Hand and caused
 the Seal of said Department to be affixed at Harrisburg,
 this nineteenth day of February, 1912.

Henry Howell
 Secretary of Internal Affairs.